

SUMMIT ACADEMY

RETURN TO SCHOOL 2021-2022



At Summit Academy, we are committed to supporting students who learn differently, and we recognize that education for our student population is best achieved through in-person, daily instruction.

Following guidance and directives from national, state and local officials and advising entities, Summit Academy's School Leadership created this framework for the 2021-2022 school year based on the guiding principles of our mission, our core values and the safety and well-being of our community.

OVERVIEW

- We will return to full-time, in-class instruction in order to maintain an optimal learning environment for our student population.
- Students will attend classes 5 days per week.
- We will continually assess the program and current circumstances to make adjustments when necessary.

ADVISING ENTITIES

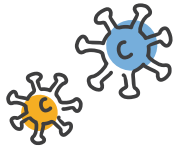


HEALTH AND SAFETY GUIDANCE



KENTUCKY K-12 SCHOOLS

Based on guidance from Governor Andy Beshear, the Kentucky Department of Health, and the Kentucky Department of Education, the following guidelines are recommended for schools to safely implement in-person instruction for students. Below are highlights of Summit's plans.



Vigilantly Assess for Symptoms: Summit Academy families should perform daily temperature checks and health screenings for all students as outlined in the Family Handbook.



Wash and Sanitize Hands to Prevent Spread: Proper handwashing training, routine handwashing measures, hand sanitizers, and other hand sanitation practices will be implemented.



Thoroughly Clean and Sanitize School Environment to Limit Spread on Shared Surfaces: Sanitation measures include daily cleaning schedule, nightly deep clean and fogging, and continued, routine HVAC inspections.



Practice Social Distancing: Designated entrance and exit points will be established, desks will be 3-feet apart and will face the same direction.



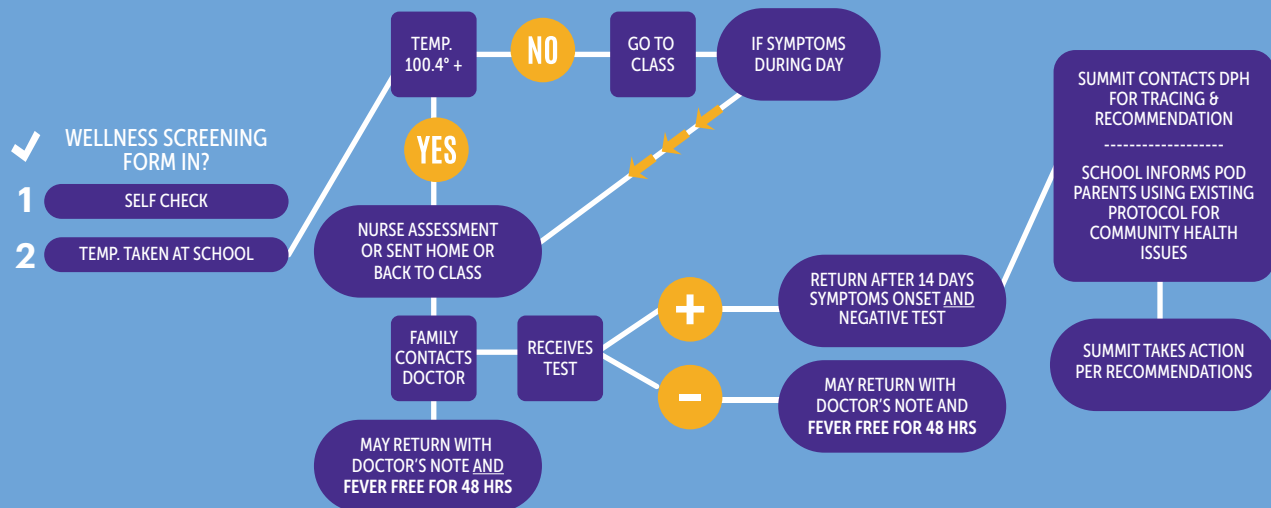
Implement Face Covering Policy: All faculty and staff members are required to wear masks in common areas. Students are required to wear masks at all times except when outdoors, eating, or directed otherwise by a teacher.

SYMPTOM IDENTIFICATION & REPORTING



STUDENTS / FACULTY & STAFF

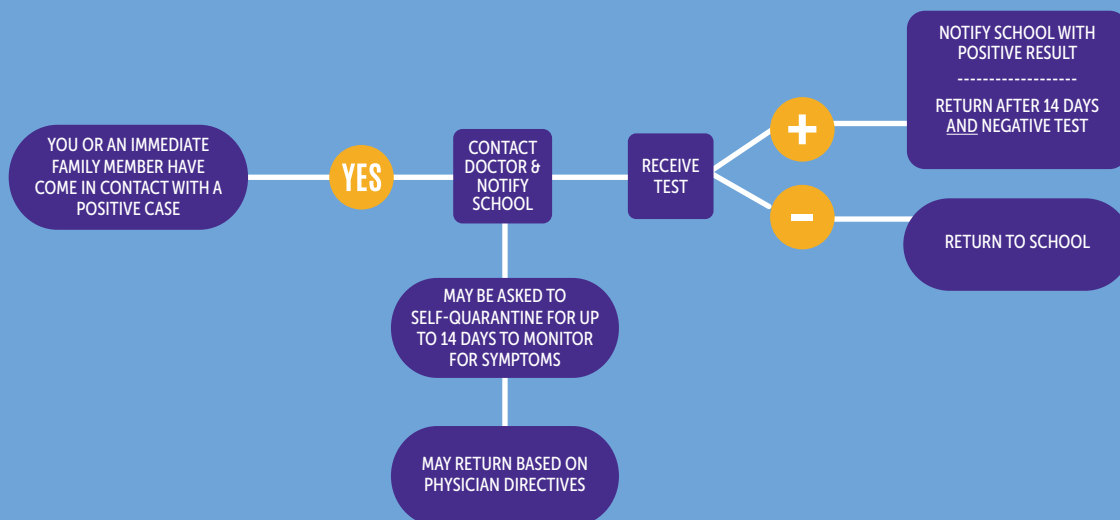
SYMPTOM IDENTIFICATION AND REPORTING*



*This process may be revised per recommendations from advising entities

IF YOU'VE BEEN EXPOSED

SYMPTOM IDENTIFICATION AND REPORTING



*This process may be revised per recommendations from advising entities