

SUMMIT ACADEMY

RETURN TO SCHOOL 2020-2021



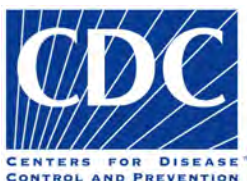
At Summit Academy, we are committed to supporting students who learn differently, and we recognize that education for our student population is best achieved through in-person, daily instruction.

Following guidance and directives from state and local officials and advising entities, Summit Academy's Reopening Committee along with School Leadership created this framework for the 2020-2021 school year based on the guiding principles of our mission, our core values and the safety and well-being of our community.

OVERVIEW

- We aim to open and return to full-time, in-class instruction in order to maintain an optimal learning environment for our student population.
- Students will attend classes 5 days per week.
- We will continually assess the program and current circumstances to make adjustments when necessary.

ADVISING ENTITIES

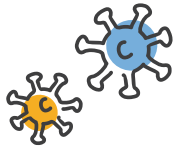


HEALTH AND SAFETY GUIDANCE



KENTUCKY K-12 SCHOOLS

Based on guidance from Governor Andy Beshear, the Kentucky Department of Health, and the Kentucky Department of Education, the following guidelines are recommended for schools to safely implement in-person instruction for students. Below are highlights of Summit's plans.



Vigilantly Assess for Symptoms: Summit Academy families should check student temperatures daily at home and temperatures will be checked in the carpool line prior to exiting the vehicle.



Wash and Sanitize Hands to Prevent Spread: Proper handwashing training, routine handwashing measures, hand sanitizers, and other hand sanitation practices will be implemented.



Thoroughly Clean and Sanitize School Environment to Limit Spread on Shared Surfaces: Sanitation measures include daily cleaning schedule, nightly deep clean and fogging, and continued, routine HVAC inspections.



Practice Social Distancing: Designated entrance and exit points will be established, desks will be 6-feet apart, and classroom transitions will be staggered to allow for appropriate distancing in hallways.



Implement Face Covering Policy: All faculty and staff members are required to wear masks in common areas. Students are required to wear masks at all times except when eating or directed otherwise by a teacher.

INSTRUCTIONAL MODELS & DISTANCING PODS



INSTRUCTIONAL MODELS

The following instructional models indicate how Summit Academy will be providing instruction to students based on identified levels. As circumstances at the school or in our community change and as we consider recommendations from the governor’s office, The Kentucky Department for Public Health (DPH) and the Kentucky Department of Education, school leadership will evaluate the need to change instructional models.

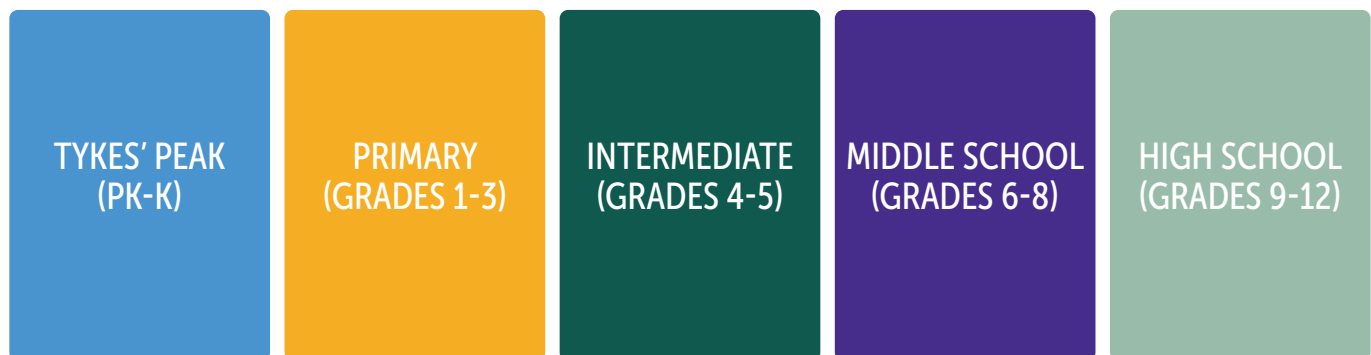
LEVEL A		All students are in the building with no or few restrictions	
LEVEL B 	In-person instruction with Remote Learning options available for students.*	IN-PERSON ATTENDANCE	In-class instruction with safety measures in place.
		REMOTE LEARNING*	Lessons will be live-streamed and accessible for students to participate in the live class.
LEVEL C	With guidance from the state, the school makes a determination about all school Remote Learning .	REMOTE LEARNING*	A mix of synchronous and asynchronous methods will be used to ensure all class content continues.

Summit Academy’s levels do not correspond with state color-coded levels for COVID-19 reporting.

*Remote Learning schedule and lesson plans will vary based on grade level

DISTANCING PODS

In order to mitigate exposure, interaction between groups of students will be limited. The graphic below represents the groups that students will have contact with each day.

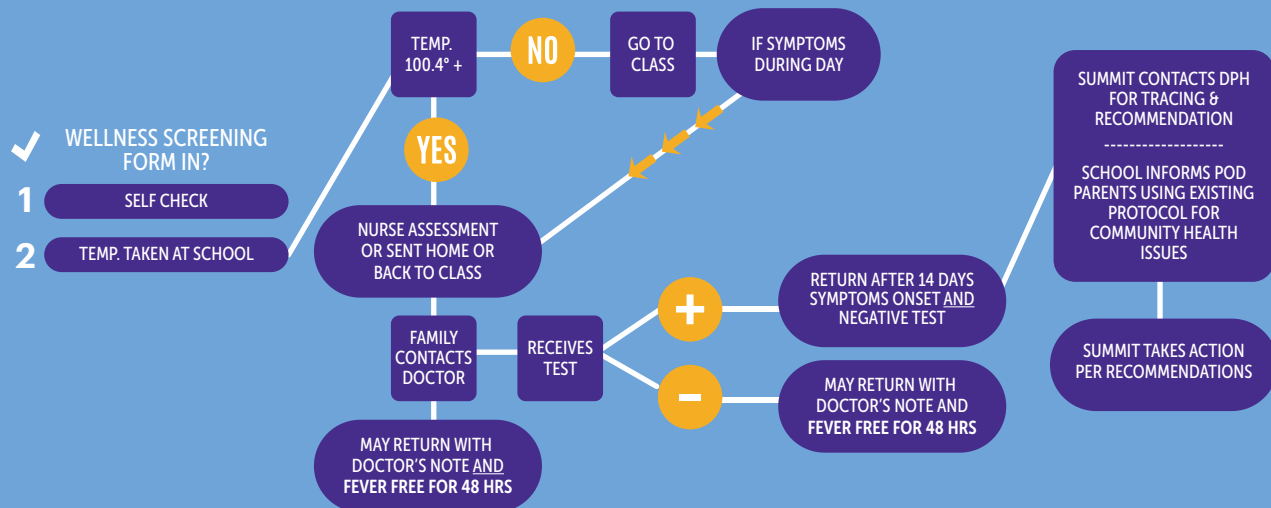


SYMPTOM IDENTIFICATION & REPORTING



STUDENTS / FACULTY & STAFF

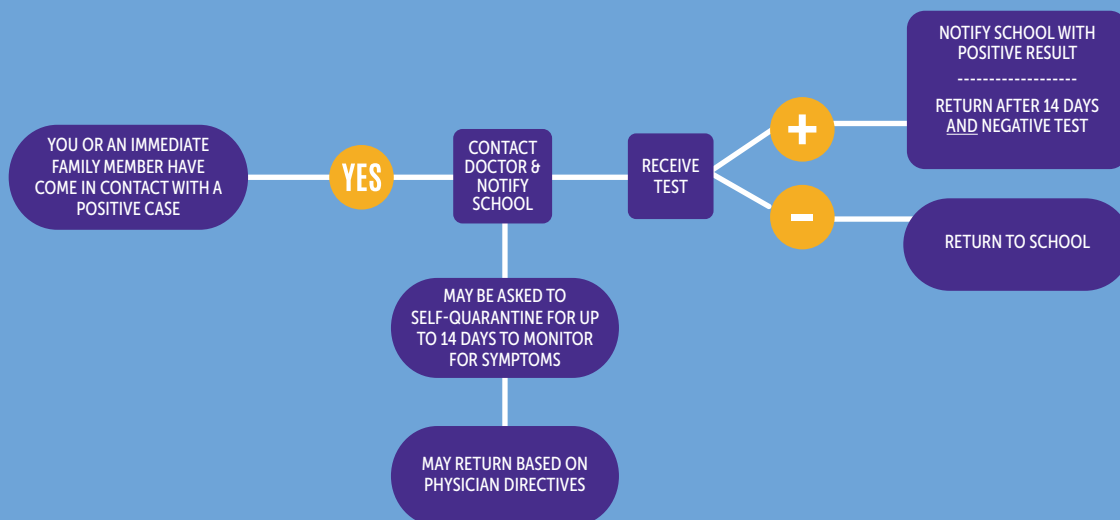
SYMPTOM IDENTIFICATION AND REPORTING*



*This process may be revised per recommendations from advising entities

IF YOU'VE BEEN EXPOSED

SYMPTOM IDENTIFICATION AND REPORTING*



*This process may be revised per recommendations from advising entities